



DEQ Transformation – 1.7 Years In

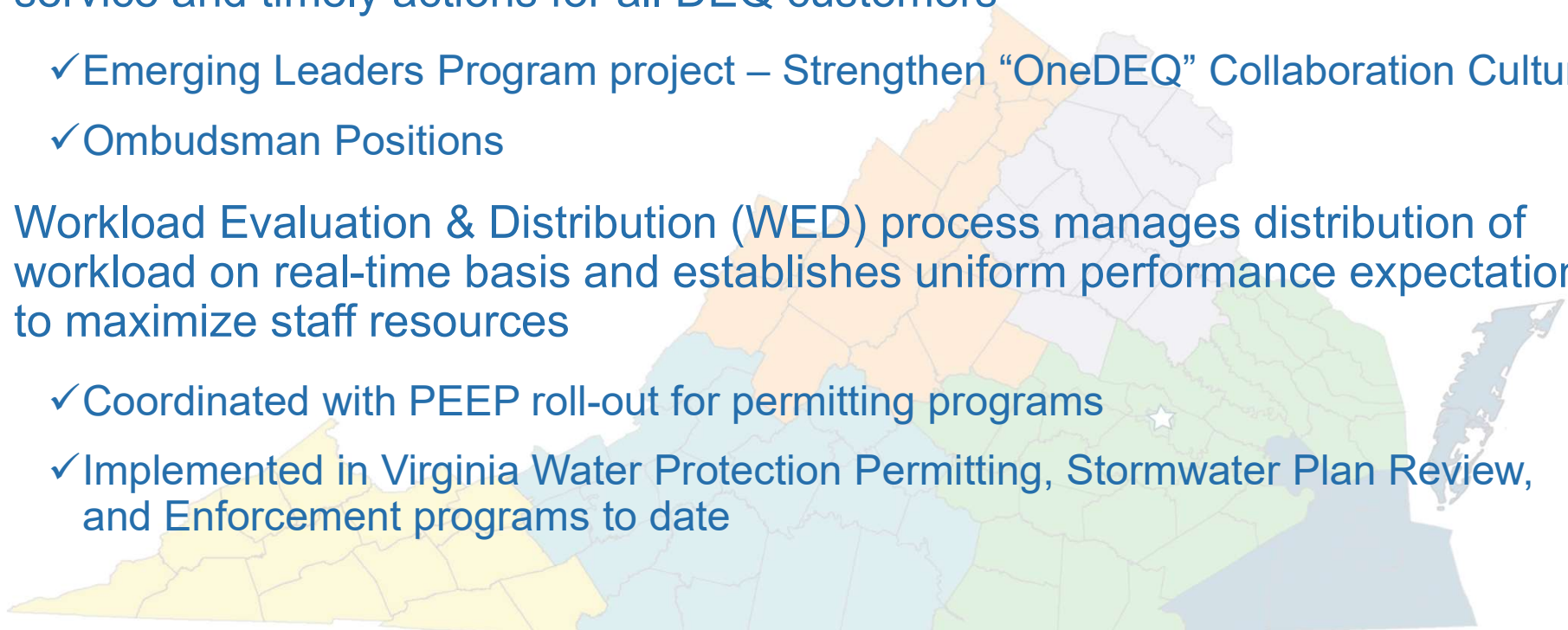
Presentation to NAIOP Northern Virginia

Mike Rolband, PE, PWD, PWS Emeritus
Director
Virginia Department of Environmental Quality
September 27, 2023

Four Initiatives	Progress Report
1. OneDEQ	In Place
2. Permitting Enhancement & Evaluation Platform (PEEP)	Phase I Completed
3. One SWM Handbook, VRRM Update, Reg. Consolidation, and Construction GP Reissuance	In Progress – 7/1/24 Effective Date
4. Commodity Trading Platform for Mitigation	CY 2024 Start

One DEQ – In Place – Cultural Change

- DEQ employees are working collaboratively to ensure responsive customer service and timely actions for all DEQ customers
 - ✓ Emerging Leaders Program project – Strengthen “OneDEQ” Collaboration Culture
 - ✓ Ombudsman Positions
- Workload Evaluation & Distribution (WED) process manages distribution of workload on real-time basis and establishes uniform performance expectations to maximize staff resources
 - ✓ Coordinated with PEEP roll-out for permitting programs
 - ✓ Implemented in Virginia Water Protection Permitting, Stormwater Plan Review, and Enforcement programs to date



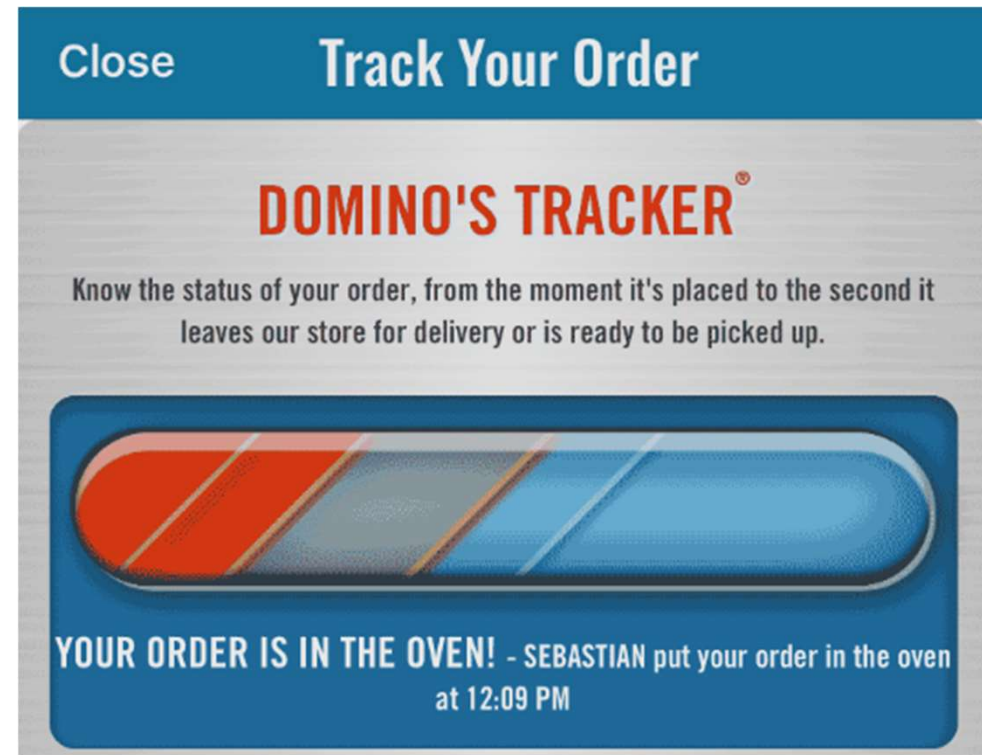
If You Can Track a Pizza, Why Can't You Track a Permit? ...It Turns Out You Can, In Virginia!

- Reviewed by:



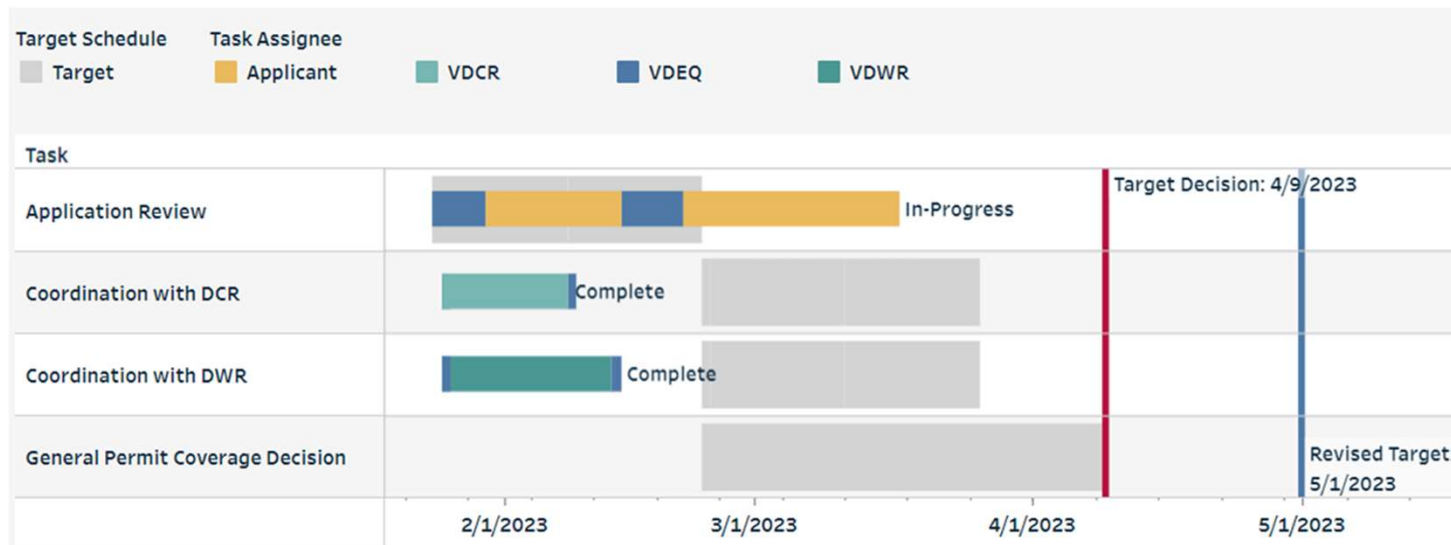
ENVIRONMENTAL POLICY
INNOVATION
CENTER

- “[Unlike PEEP,] Several other permit tracking/streamlining efforts in the US have made advances, but miss out in documenting deadlines, tracking progress, providing transparency, and utilizing this technology to diagnose and improve the permitting process...”








Permitting Enhancement & Evaluation Platform (PEEP)

- Public schedule to track permit review process
- Transparency
- Project management tool



PEEP Internal Reporting Sample

- Drill down on **Performance** from DEQ to Responsible Parties by Office, Program Type, Request Type, or Permit Writer
- Management tool to identify bottleneck points at which to apply resources or improve processes
- Grades based on percent of permits for which we achieve the scheduled goal:

A		90-100%
B		80-89%
C		70-79%
D		60-69%
F		<60%

DEQ Performance Heat Map – Agency Level

Filters & Legends

Request Decision Date: All values

Performance Level: Overall

Show Trend: Monthly

Grade of Percent Completed on Time

- A
- B
- C
- D
- F

No. of Permits Issued/Denied

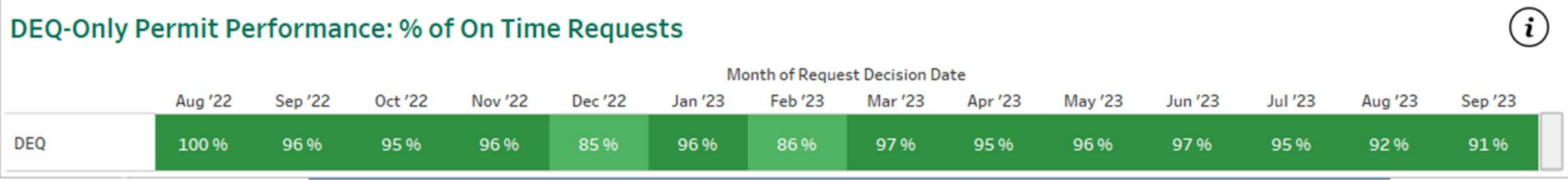
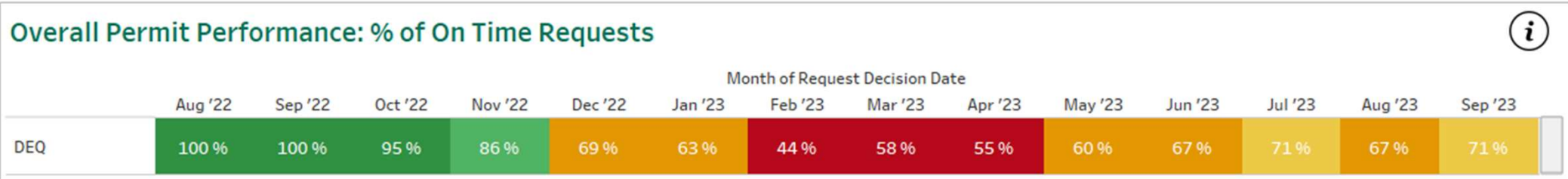
730

No. of Overdue Requests

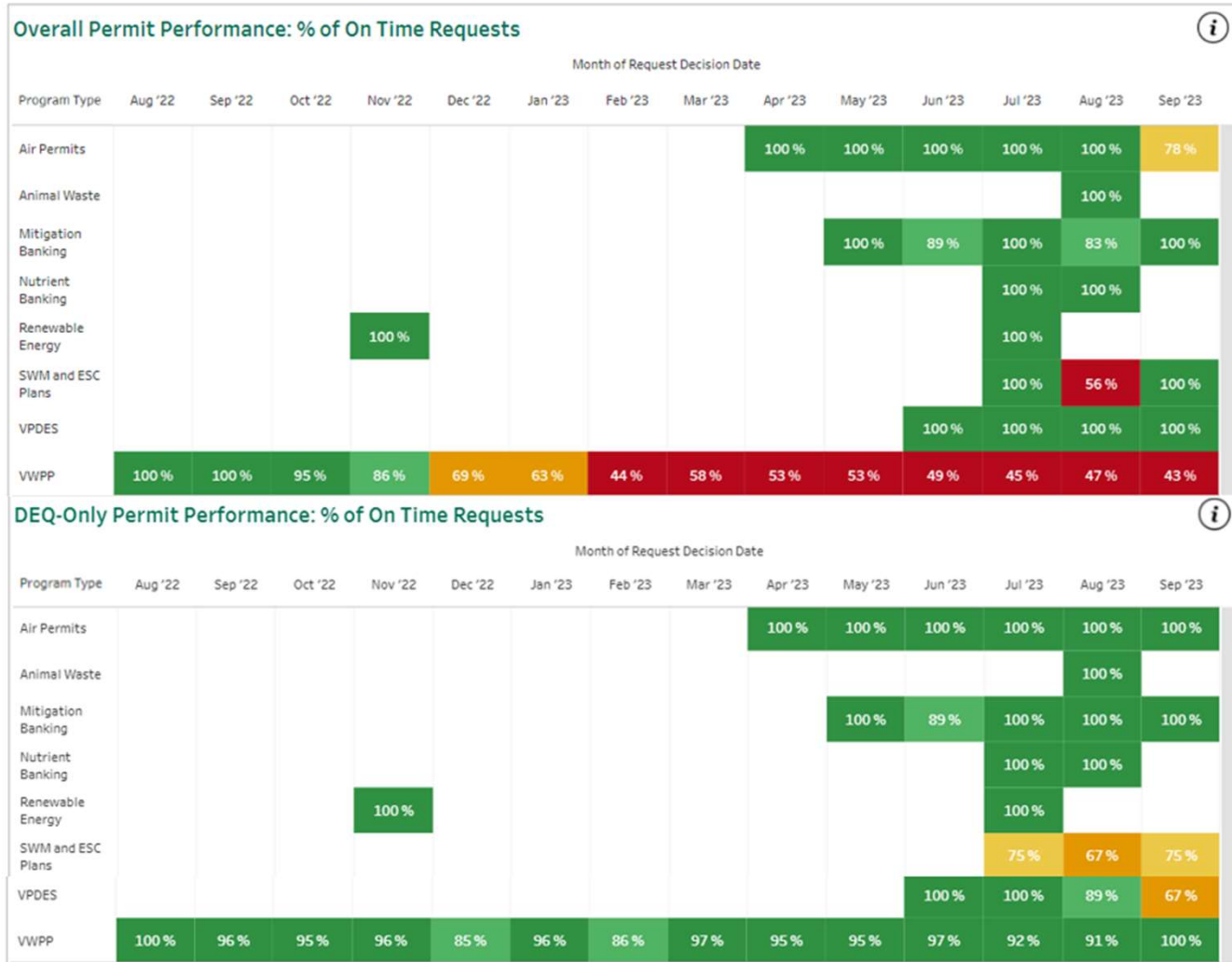
225

% of Request Meeting Targets

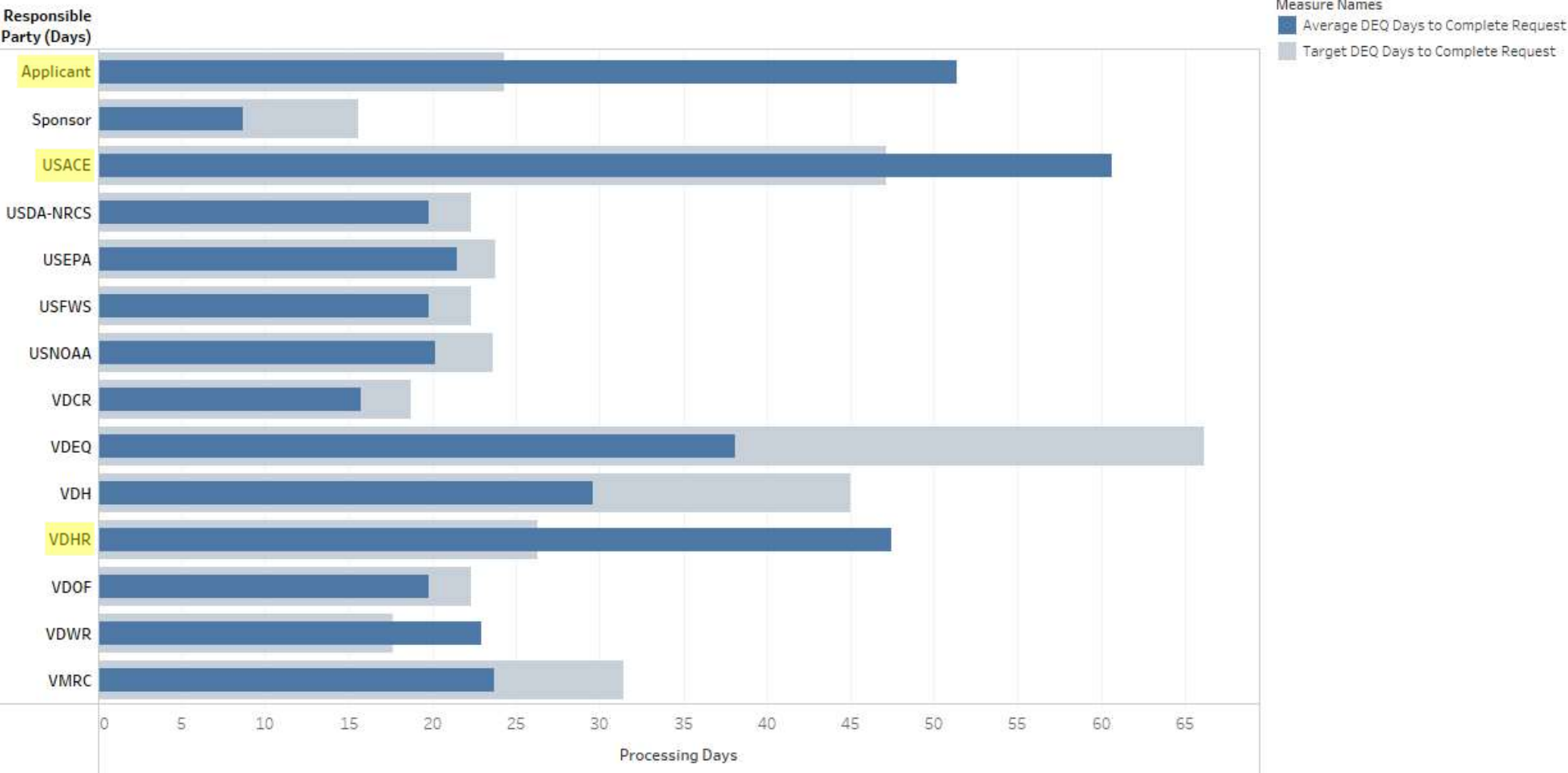
69 %



DEQ Performance Heat Map – Program Level



Average Target Schedule vs. Actual by Responsible Party



One Stormwater Handbook



to



- Produce Best In Class Stormwater Handbook
- Update & Consolidate Stormwater Information
- VRRM Update
- ESC/SWM Regulation Consolidation
- 2024 Construction General Permit (CGP) Reissuance

Multipronged Solution

Improvement	Status
1. All current documents on website	Completed
2. New SWM Handbook	To Be Completed - End of 2023 – Effective 7/1/2024
3. SWM Guidance – “Cliff Notes”	Effective 2/20/2023
4. Streamlined SWM Plan Review Guidance	Effective 2/20/2023
5. Virginia Runoff Reduction Method (VRRM) Update	Informal Comment Period Ends 8/21/2023
6. SWM/ESC Reg Consolidation - HB1250 & SB673 (2016) • HB2390 & SB1168 Approval (2023)	SWCB Approved 6/22/2023 • Effective 7/1/2024
7. Agribusiness SWM	Effective 7/1/2023
8. Recruiting Staff	Very successful- 90% staffing achieved 7/1/2023
9. Construction General Permit (CGP)	Automated 7/1/2023

Commodity Trading Platform

- Develop trading platform for water-related commodities to provide transparency for permittees with regard to prices and supply and demand
- Assist market in meeting demands of a strong economy
- Coming in 2024!



In the Weeds of the VRRM - Update from 3.0 to 4.0

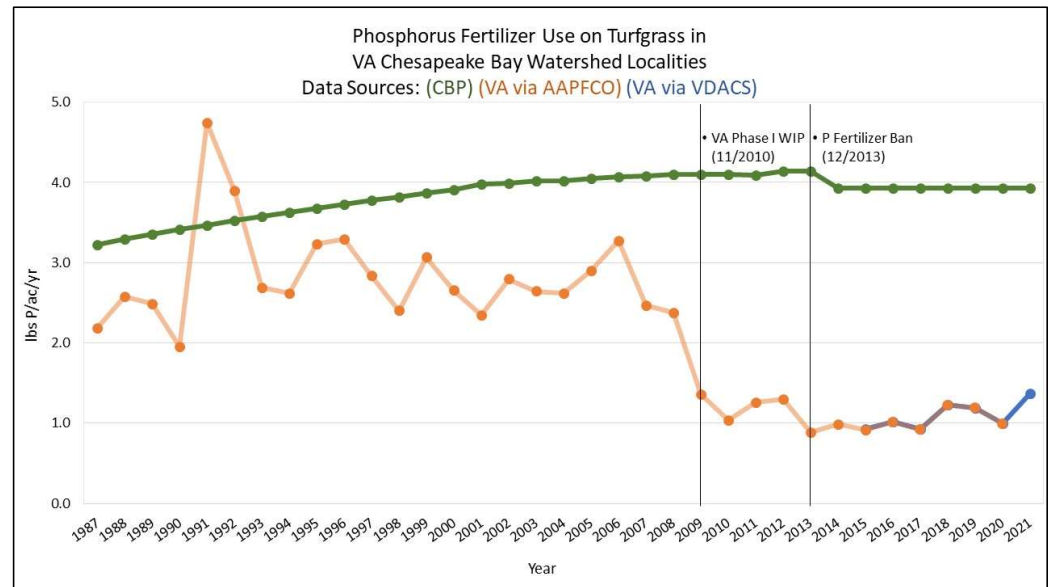
1. Replaced the 'Simple' equation for water quality nutrient loading computations with loading rates established from CAST
2. Split the forest/open space category into two distinct VRRM categories, to result in four land cover types in VRRM 4.0.
3. Added in 2 new BMPs (Regenerative Stormwater Conveyance and Trees)
4. Updated the phosphorus target (old was 0.41 lbs/ac/yr) based land cover conversion data and CAST loading rates

DID NOT:

1. Modify treatment volume computation procedure (or 1" rainfall target)
2. Modify CNs or Rvs for existing VRRM categories

Lawn Fertilizer

- WIP I (2010) and HB1831 (2011) banned most total phosphorus (TP) in lawn fertilizer
- 4 million lbs/yr TP reduction in lawn fertilizer application in VA
- Bay Model and VRRM to be updated



Revised Loading Rate Tables using Revised Target Loadings

Proposed VRRM 4.0 Values

2021 Adjusted Loading Rates (lb/ac/year) - Phosphorus

Category	A	B	C	D
Forest	0.042	0.062	0.083	0.104
Mixed Open	0.239	0.341	0.385	0.454
Managed Turf	0.479	0.639	0.703	0.799
Impervious	0.794	0.794	0.794	0.794

2021 Adjusted Loading Rates (lb/ac/year) - Nitrogen

Category	A	B	C	D
Forest	0.702	1.054	1.405	1.756
Mixed Open	1.091	1.559	1.760	2.075
Managed Turf	5.215	6.953	7.649	8.692
Impervious	11.797	11.797	11.797	11.797

Existing VRRM 3.0 Values

Current VRRM Loading Rates (lb/ac/year)

Category	A	B	C	D
Forest	0.046	0.068	0.091	0.114
Managed Turf	0.342	0.456	0.502	0.570
Impervious	2.167	2.167	2.167	2.167

Current VRRM Nitrogen Loading Rates (lb/ac/year)

Category	A	B	C	D
Forest	0.326	0.489	0.652	0.815
Managed Turf	2.445	3.259	3.585	4.074
Impervious	15.483	15.483	15.483	15.483

Revised loading rate computations:

1. Impervious rates are still around 37% of the VRRM 3.0 rates
2. Managed turf rates are approximately 1.4x the VRRM 3.0 rates (vs. 3.0x)

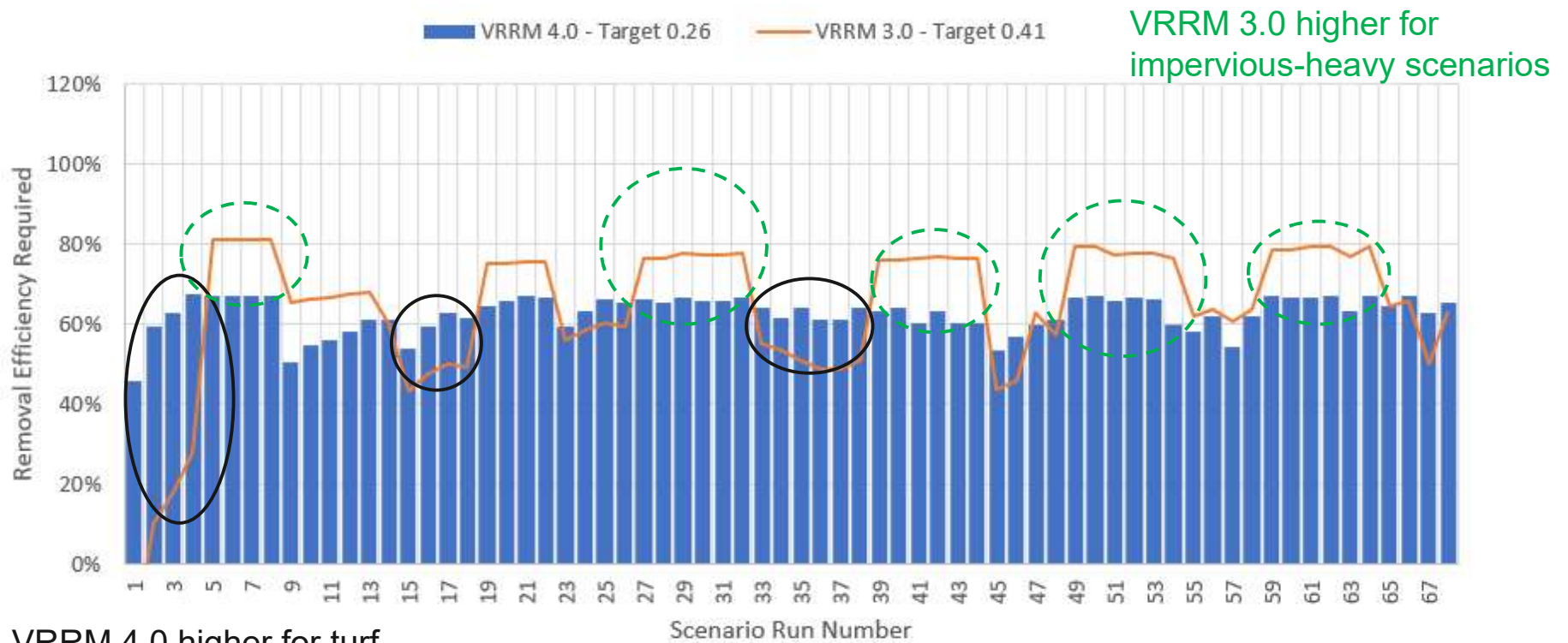
Nutrient Target Load Changed from 0.41 to 0.26 lbs TP/ac/yr

- Same 2 methods used – with similar results
- New land conversion used (worst case expected in future CBWM change)

Category	% of Total	Combined Loading Rate (lb TP/ac/yr)	Adjusted Loading Rate (lb TP/ac/yr)
Natural - excluding stream/shoreline	81%	0.092	0.074
Agriculture	19%	0.997	0.189
		Nutrient Target	0.264

New Development Results (Total Disturbance 3 acres)

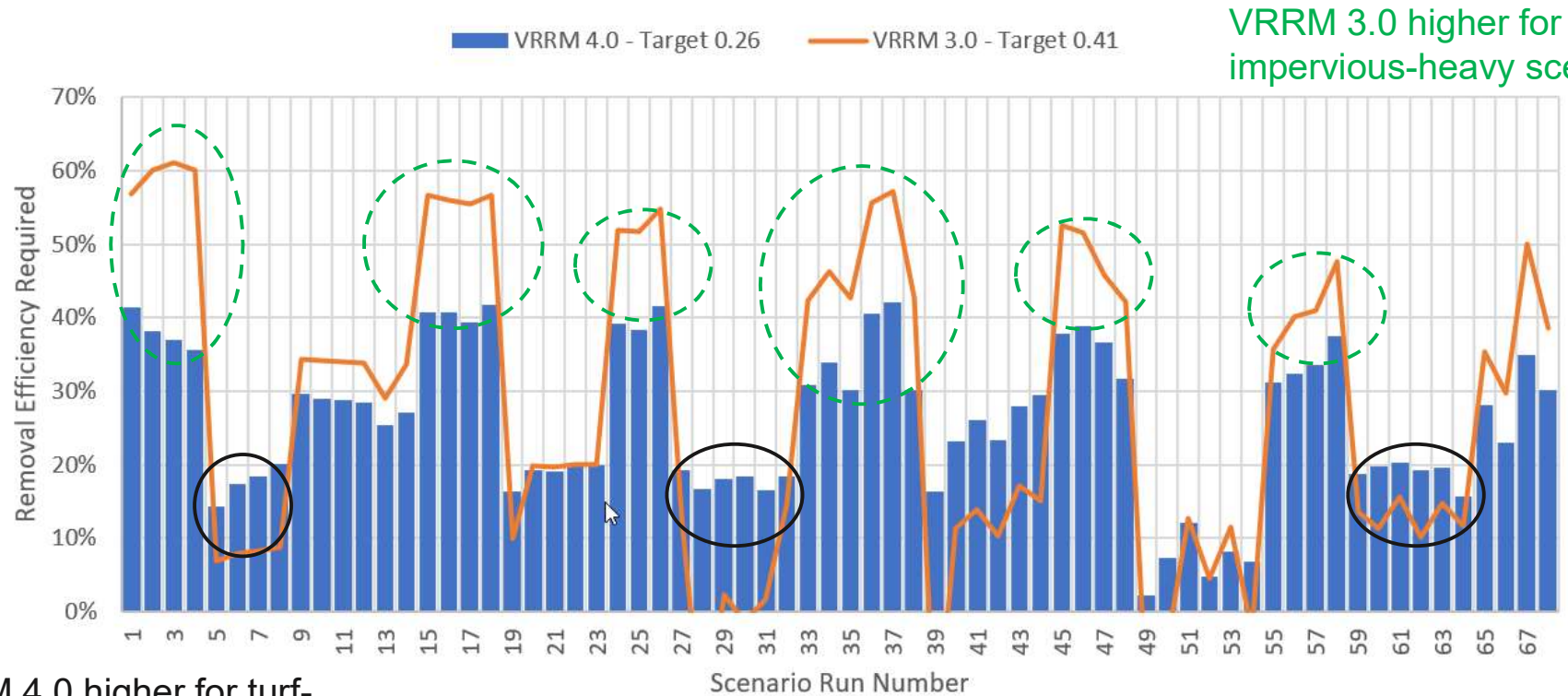
Comparison of VRRM 4.0 vs. 3.0 Removal Efficiencies



VRRM 4.0 higher for turf-heavy scenarios

Re-development Results (Total Disturbance 3 acres)

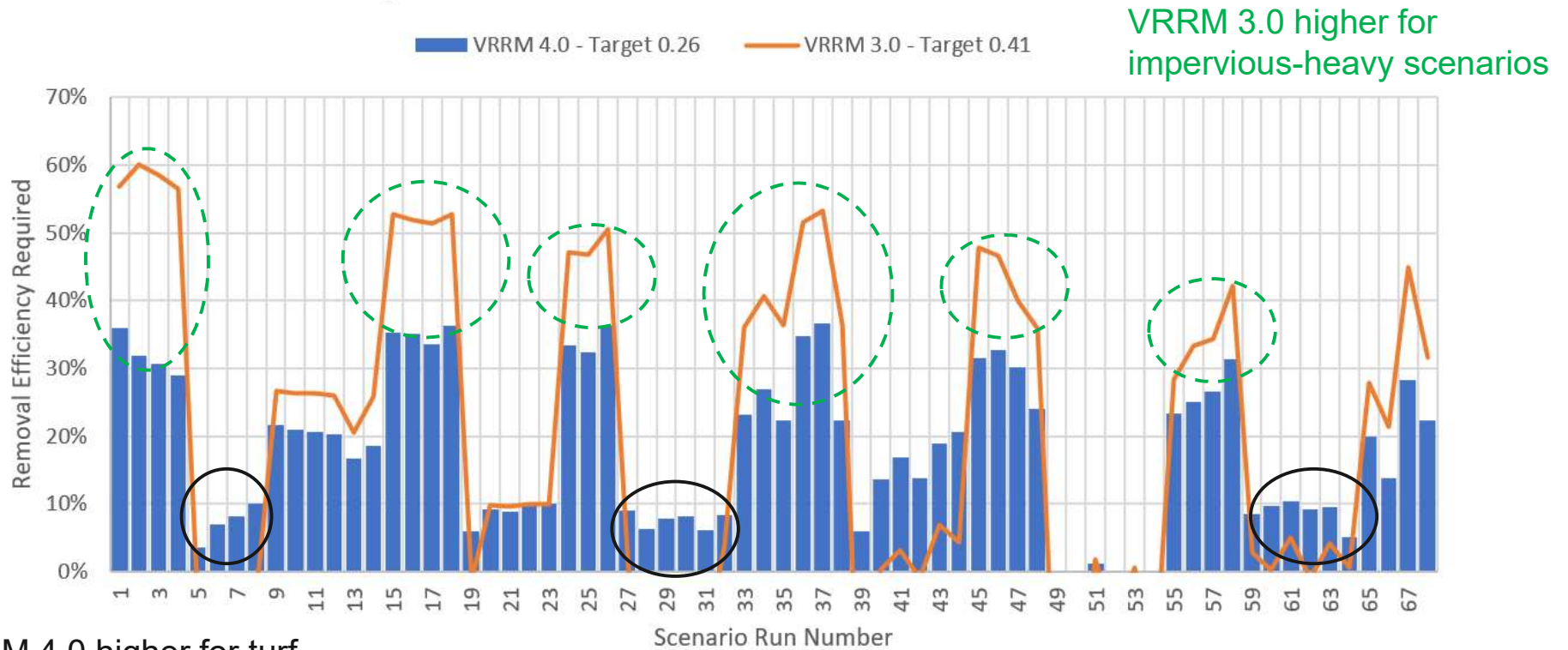
Comparison of VRRM 4.0 vs. 3.0 Removal Efficiencies



VRRM 4.0 higher for turf-heavy scenarios

Re-development Results (Total Disturbance 0.8 acres)

Comparison of VRRM 4.0 vs. 3.0 Removal Efficiencies



VRRM 4.0 higher for turf-heavy scenarios

Comparing Results from VRRM 3.0 & VRRM 4.0 (cont.)

Compared the total efficiency required across all scenarios to determine trends in the two versions of the spreadsheets:

New Development [3 acres] (68 runs)

VRRM 3.0: **70%** Efficiency Required (278.9 lb load, 195.2 lbs removal required*)

VRRM 4.0: **63%** Efficiency Required (144.1 lb load, 91.1 lbs removal required*)

Re-development [3 acres] (68 runs)

VRRM 3.0: **27%** Efficiency Required (308.0 lb load, 82.5 lbs removal required*)

VRRM 4.0: **26%** Efficiency Required (148.2 lb load, 38.9 lbs removal required*)

Re-development [0.8 acres] (68 runs)

VRRM 3.0: **18%** Efficiency Required (82.1 lb load, 15.2 lbs removal required*)

VRRM 4.0: **18%** Efficiency Required (39.5 lb load, 7.4 lbs removal required*)

*Note: Removal required does in some instances include negative values

Enforcement Transparency



myDEQ Portal

Welcome to the myDEQ portal, DEQ's comprehensive, online reporting tool that is available to users 24 hours a day, seven days per week.

Currently, the myDEQ portal allows the public to:

- View permit application status
- Report pollution
- Search for pollution reports
- Search for certified stormwater and erosion control certificate holders

Registered myDEQ portal users can also:

- Register, view and update underground storage tank facility and owner information
- Submit Title V Annual Compliance Certification reports for air permits
- Submit annual Virginia Environmental Excellence Partnership program reports
- Submit annual Solid Waste Information & Assessment reports
- Apply for stormwater or erosion and sediment control certifications and re-certification
- Apply for and report on Litter Grant awards
- Submit Annual Poultry Waste Transfer Data

Registered users benefit from:

Sign In

Register

Quick Links:

Manage Certifications

- Find My Profile
- Find a certificate holder

Search Pollution Reports

Report Pollution

Permitting Enhancement & Evaluation Platform

Environmental Enforcement Case Documents

Find Help

Virginia DEQ Enforcement Cases



Total Number of Cases
2,022

Average Days
462



Reset



Filters & Legends

Region Office Name: (All) | County: (All) | Enforcement Action Type: (All) | Case Status: (All) | Enforcement Rep: (All) | Enforcement Action Num...: (All)

Case Info - Basic Details on Enforcement Cases

Enforcement Action Number	Legal Name	Facility Name	Media Program	County	Enforcement Rep	Case Status	Number of Days	Cash Portion of Civil Charge	Final SEP Value
BR07-0919	Cooper Construction, Incorporated, AI M.	Cooper Construction, Incorporated, AI M.	VWPP	Roanoke County	Steven B Wright	Terminated	822	\$50,750.00	\$0.00
BR09-1004	Farmville, Town of	Farmville SLF - SWP 195	Solid Waste	Prince Edward County	Jefferson D Reynolds	Terminated	658	\$9,000.00	\$0.00
BR10-0820	Blue Ridge Fiberboard, Inc.	Blue Ridge Fiberboard, Inc. - LF	Hazardous Waste	Pittsylvania County	David M Miles	Terminated	264	\$0.00	\$0.00
BR11-0414	Nutri-Blend, Inc.	G.D. and Frances Gilliam - 22.01 acre tract	VPA	Campbell County	Jeffrey L Hurst	Terminated	137	\$0.00	\$0.00

QUESTIONS?