

NAIOP Northern Virginia Briefing

Robin Morey

Vice President, Planning and Facilities Management
Georgetown University



GEORGETOWN UNIVERSITY

Georgetown University

- Historical Perspective
- Georgetown today
- Neighborhood Context
- Current projects
- Growth strategies



Georgetown University Historical Perspective

Jesuit Institution Needs Blind Admissions



- The College on the Hill (1789 -1860s)
 - (Originally at home in Maryland – DC established in 1790)
- Healy Hall and the Emerging University (1870s -1918)
- 20th Century– Expansion and Ambition (1919-1970s)
- Growth to a modern research university (1970 to present)

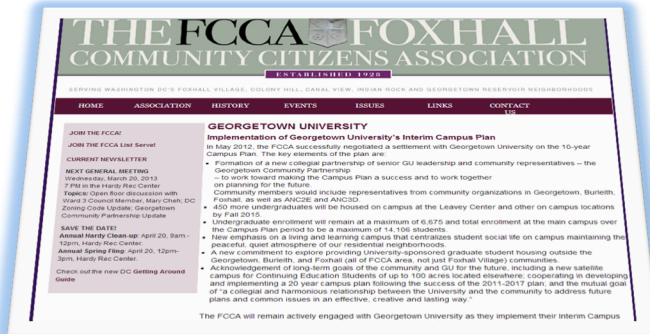
Georgetown University Today

- Modern Global Research University
 - 104 acres
 - 6,000,000 square feet
 - 12,000 undergraduate and graduate students



Neighborhood Context and Town Gown

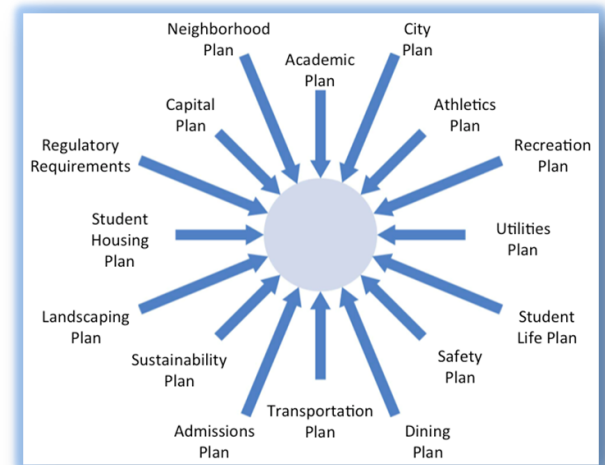
- Need for growth, community concerns, collaboration:
 - ✓ Unplanned growth
 - ✓ Student behavior
 - ✓ Student houses leased in neighborhoods
 - ✓ Congestion/traffic
 - ✓ Environmental/Landlords
- University and community recognized common interest and goals and form the Georgetown Community Partnership (GPC)



Neighborhood Context and Town Gown

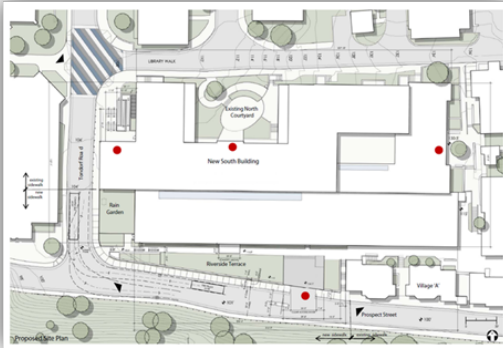
Desire to strengthen a living and learning community on the 104 acre footprint and engage in collaborative master planning

- Addition of 385 beds near term and 700 beds long term
- Addition of student social space on campus
- Transportation improvements
- Normal university growth requirements



Significant Projects

Healey Family Student Center



Repurpose of Office Space to Student Center
Renovation size: 40,000 Gross Sq. Ft.
Currently in construction

Significant Projects

Northeast Triangle



225 Beds

Construction

Start: Summer 2014

Finish: Summer 2016

Significant Projects

Historical Renovation - Old Jesuit Residence



160 Beds

Construction

Start:

May 19, 2014

Finish:

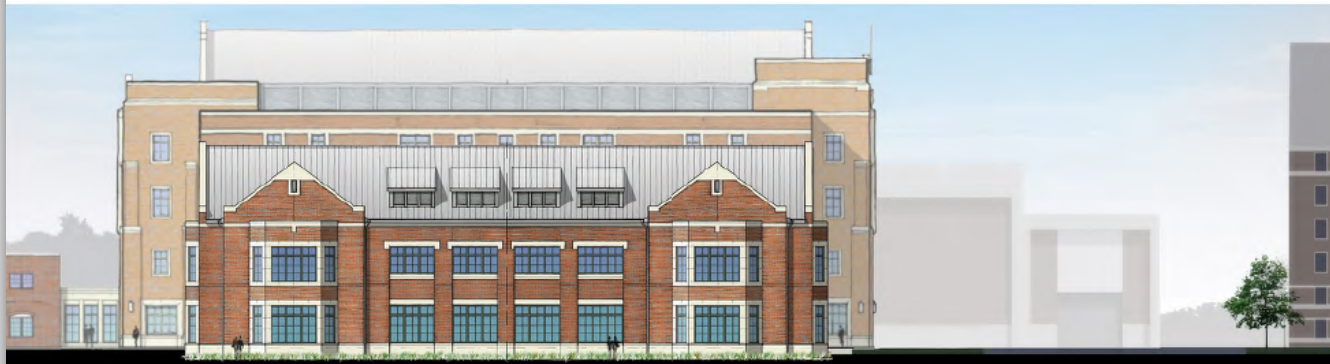
Summer 2015

Significant Projects

Intercollegiate Athletic Center



East Elevation



South Elevation

Construction

Start:
Summer 2014

Finish:
Summer 2016

Significant Projects

Utility Plant Chiller Installation



Construction

Start:

Spring: 2014

Finish:

Summer 2015

Significant Projects

Transportation Improvements

Construction

Start: Fall 2014

Finish: Fall 2015



Where to grow now?

Where to grow in 10 years?

**Expand at new locations
In DC, Maryland, Virginia??**

**Grow at our Law Center?
Grow at our School of Continuing Studies?**

**Build and Own?
Lease?**