



# NGA Campus East

Tom Bukoski  
NCE Design and Construction  
29 September 2010

Derived from:

Declassify on:



# NGA Campus East

- Why NCE
- Design Guiding Principles
- NCE Site Plan
- LEED
- Benefits of NCE
- Construction Montage



106 Days until 1<sup>st</sup> Move to NCE





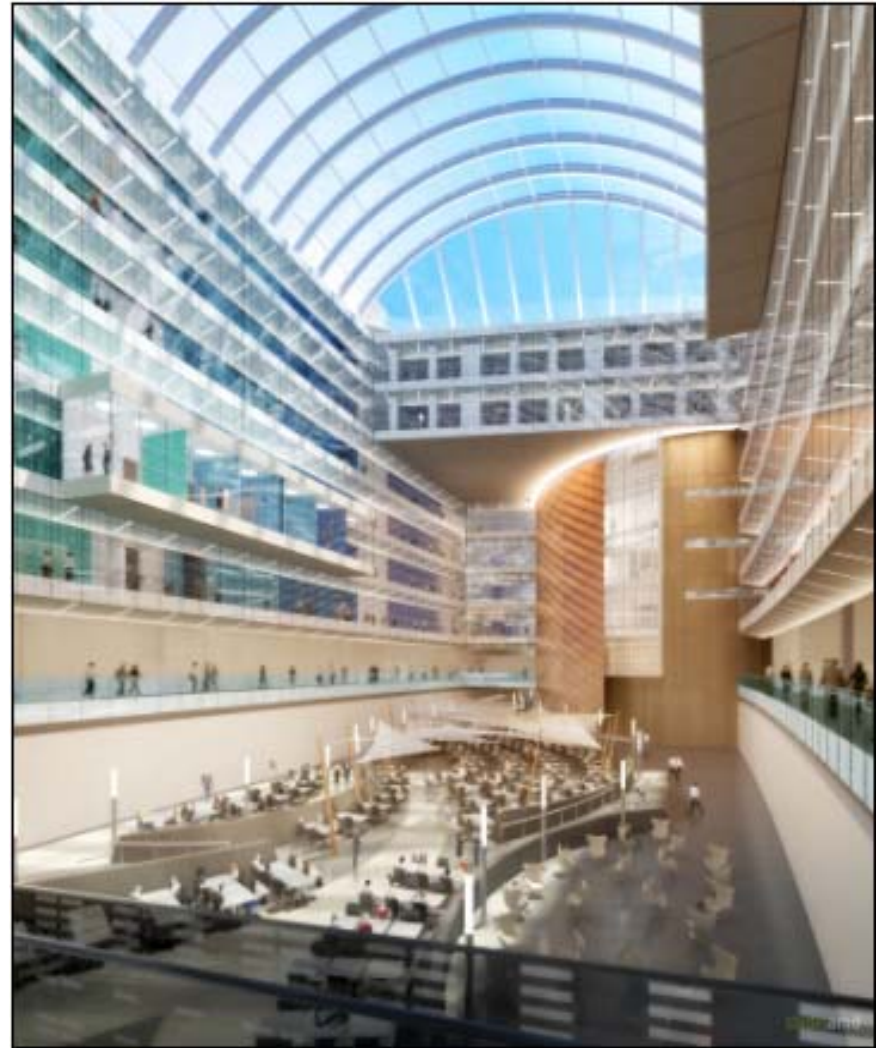
# NCE/BRAC Direction

- Mandated by law, how do you do the following in less than 42 months
  - Build a 2.4M Sq Ft facility with growth for 25%
  - Provision state of the art IT and a Tier 2 plus Data Center
  - Transition all the necessary systems (over 270)
  - Move 8500 people and all of their personal and professional information from 5 sites
- While...
  - Staying within the existing NGA funding (POM)
  - Minimizing the impact to any NGA/NSG mission
  - Inspiring and unifying the NGA workforce and mission partners
  - Consolidating workstations (38 types), networks (34) and software (over 25,000 packages)
  - Migrating to ASP/ISP and Service Delivery
  - Virtualizing the infrastructure to minimize cost and improve service
  - Integrating with mission capabilities at non-BRAC and deployed site



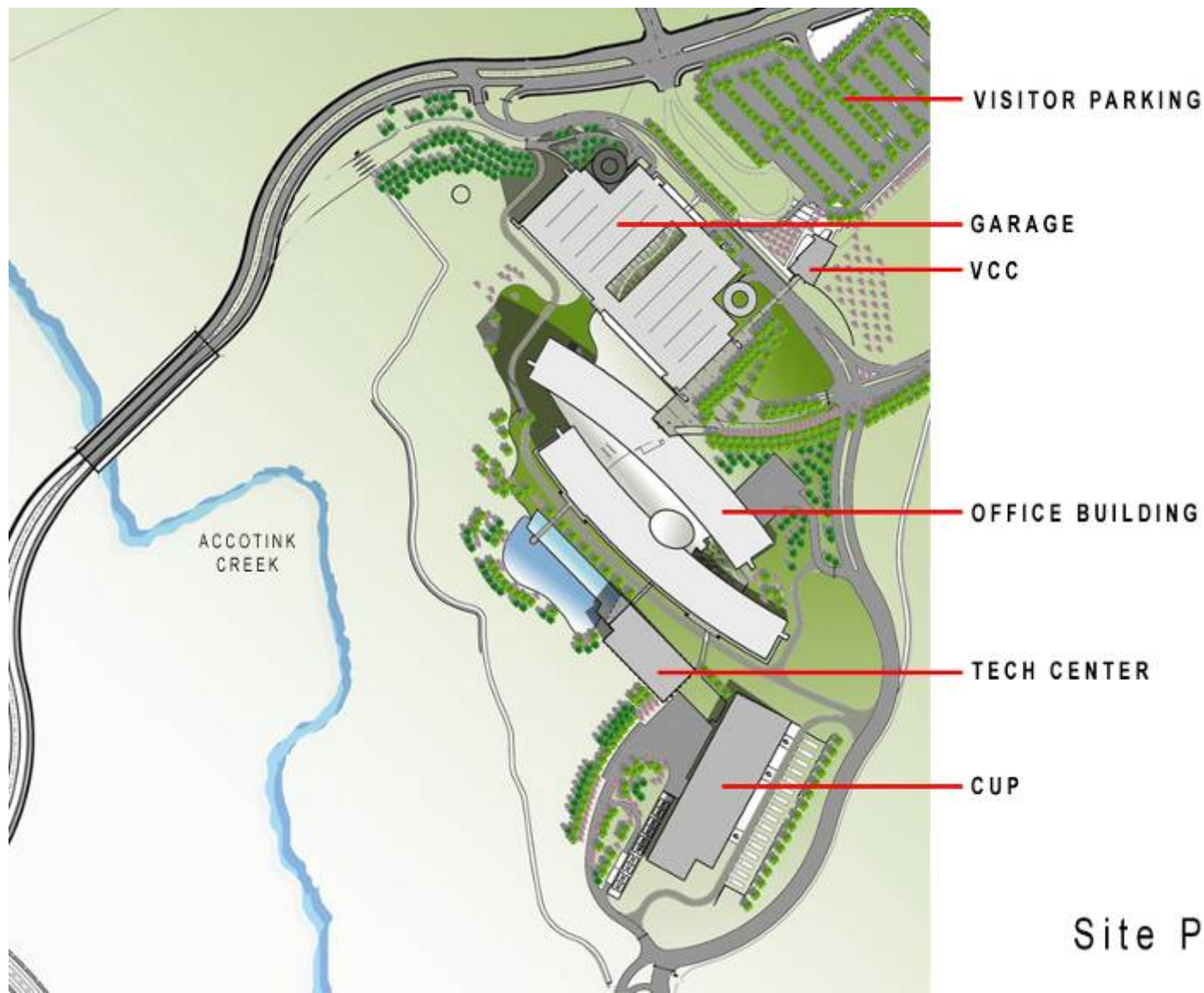
# Design Guiding Principles

1. Enable Mission Success
2. Inspire Workforce and *Customers*
3. Facilitate organization change and transition
4. Meet the needs of NGA's future high-tech workforce
5. Unify...





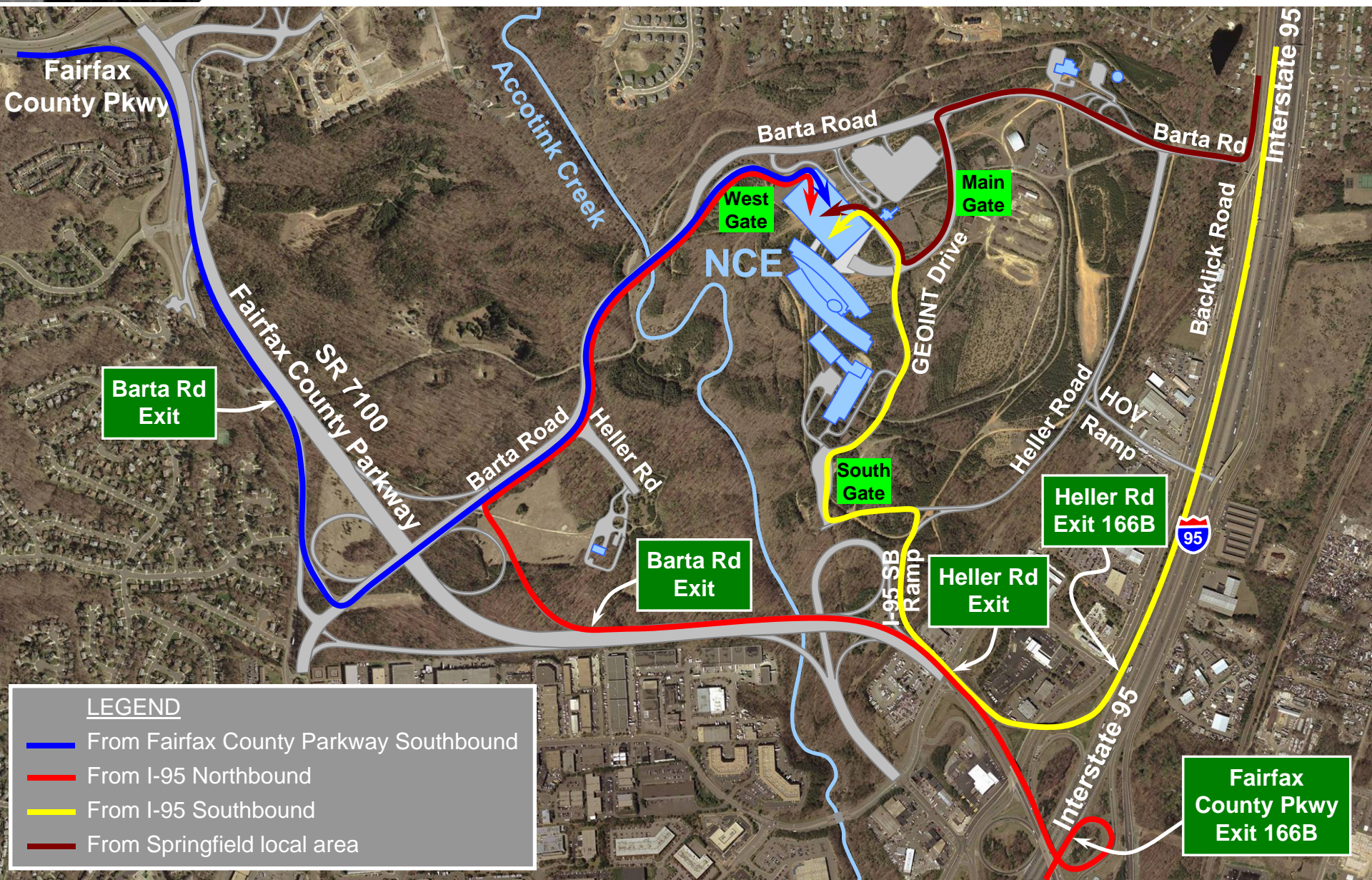
# Site Plan



Site Plan



Okay, so how will I get there when it's done?



LEGEND

- From Fairfax County Parkway Southbound
- From I-95 Northbound
- From I-95 Southbound
- From Springfield local area



# Leadership in Energy and Environmental Design (LEED)



- LEED Rating System Goals:
  - Transform the market for green building strategies and products.
  - Provides common language for project teams
  - Relative comparison of similar projects
  - Consistent metrics for different project teams



# How NCE Will Earn the Silver Rating

- Goal – Silver Certification features

- Green roof
- Use of building materials that include recycled content
- Recycling construction waste
- Use of Local and Regional Construction Materials
- Site restoration & open space
- Efficient water usage
- Storm water reuse – irrigation system (& make up water)
- Development of contaminated site
- Foiltec roof or the technical term Ethylene Tetrafluoroethylene
- Chilled beam
- Energy efficient lighting Systems
- Indoor Air Quality

Platinum 52 points and above

Gold 39-51 points

Silver 33-38 points

Certified 26-32 points





# Benefits: *What to Expect at NCE*

## More than just a new building....

- ✓ Purpose built facility
- ✓ Unified environment to improve collaboration
- ✓ Limited enclosed offices
- ✓ Open, flexible office space with *windows*
- ✓ Opportunity to transform systems and IT architecture
- ✓ Integrated analytical workstations
- ✓ Shared conference and meeting rooms
- ✓ Virtualized applications maximize seating and assignment flexibility
- ✓ *Green elements incorporated in design*

***Enhanced Environment for GEOINT***

# Construction Progress - 2010



**NGA Campus East**



???



**ON TIME, ON BUDGET, ON TRACK**





[www.nga.mil](http://www.nga.mil)